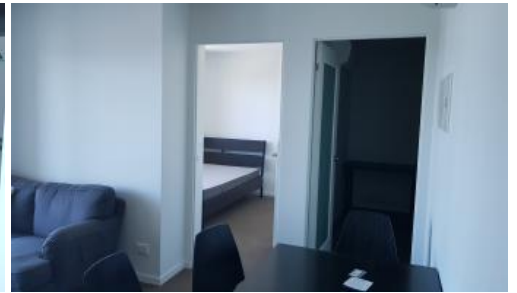


Leased



2708, 5 Sutherland St, Melbourne



Bright, city views, FULLY FURNISHED in perfect location

Perfectly located in the heart of Melbourne CBD, This apartment is walking distance away from RMIT, Melbourne University, Melbourne Central Train Station, Victoria Market, restaurant and shops.

It Comprises of 2 Bedrooms With built in robe, Modern kitchen with gas appliances, Modern Bathroom, Open plan Living and dining area opening to a covered balcony with perfect City views

Facilities include Gym, Swimming pool, spa and sauna.

Call Now For Inspection.

The above information provided has been furnished to us by the vendor/s. We have not verified whether or not that information is accurate and do not have any belief in one way or the other in its accuracy. We do not accept any responsibility to any person for its accuracy and do no more than pass it on. All interested parties should make and rely upon their own inquiries in order to determine whether or not this information is in fact accurate.

2 1

<b>Price</b>	\$ 350/ week
<b>Property Type</b>	Rental
<b>Property ID</b>	846
<b>Floor Area</b>	65 m2

#### Agent Details

Sujono Goi - 0417 142 683

#### Office Details

Melbourne  
Suite 307 / 2 Queen Street  
Melbourne VIC 3000 Australia  
03 9620 0307

**VANTAGE POINT**  
REALTY