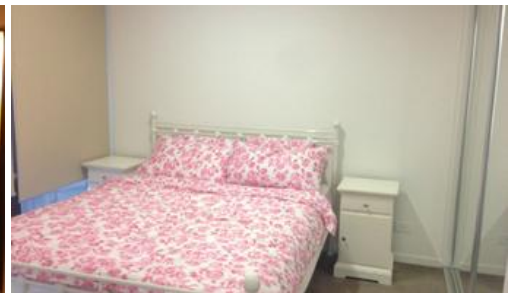
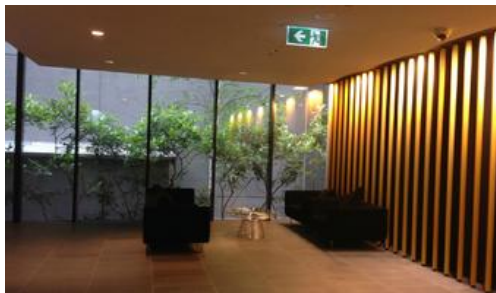




**1112, 568 St Kilda Rd, Melbourne**



## IMMACULATE apartment with LAKE VIEWS

Perfectly Located along St Kilda Road Boulevarde, This IMMACULATELY presented apartment is minutes away from Melbourne CBD, Albert park lake and Golf course, South Yarra Shopping Strip & easily accessible to Citylink access.

Internally comprises of 1 Spacious bedroom, Open plan kitchen with Modern Stainless Steel kitchen Appliances, Modern Bathroom and Study area. Also fully complemented with Open Balcony with views to Albert Park lake & 1 secure car park.

Facilities include a concierge, Well equipped Gym.

Inspect now as per advertised or call for appointment now.

The above information provided has been furnished to us by the vendor/s. We have not verified whether or not that information is accurate and do not have any belief in one way or the other in its accuracy. We do not accept any responsibility to any person for its accuracy and do no more than pass it on. All interested parties should make and rely upon their own inquiries in order to determine whether or not this information is in fact accurate.

1 1 1

<b>Price</b>	\$420K
<b>Property Type</b>	residential
<b>Property ID</b>	720
<b>Floor Area</b>	54 m2

### Agent Details

Sujono Goi - 0417 142 683

### Office Details

Melbourne  
Suite 307 / 2 Queen Street  
Melbourne VIC 3000 Australia  
03 9620 0307

  
**VANTAGE POINT**  
REALTY