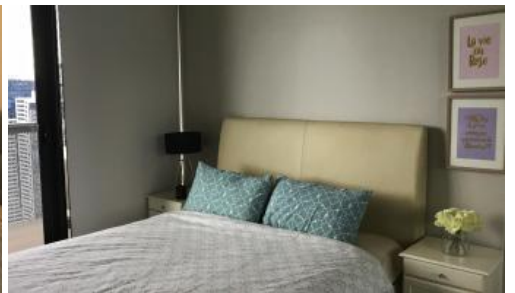
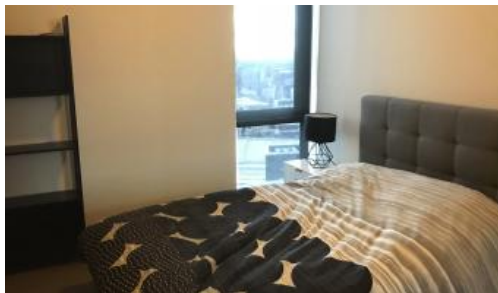
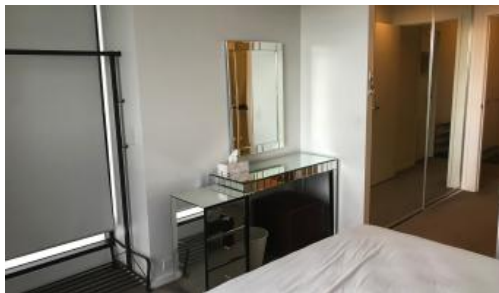




350 William St, Melbourne



Super SPACIOUS Luxury FURNISHED Apartment

Perfectly located across the road from Flagstaff garden, This modern & secure apartment is also minutes away from Melbourne CBD, flagstaff station, Dockland, Southbank & Melbourne University by tram directly in front of the building.

It comprises of Entry foyer, FULLY FURNISHED, 3 Spacious bedrooms, Main with En-suite and walk in robe, 2 additional bedrooms facing the city skyline and 2 Modern bathrooms. Huge open plan living dining area with perfect views and additional Study Area.

Facilities include Gym and ground floor cafe

Inspection by appointment or as per advertised.

The above information provided has been furnished to us by the vendor/s. We have not verified whether or not that information is accurate and do not have any belief in one way or the other in its accuracy. We do not accept any responsibility to any person for its accuracy and do no more than pass it on. All interested parties should make and rely upon their own inquiries in order to determine whether or not this information is in fact accurate.

3 3 1

Price	1200
Property Type	Rental
Property ID	643
Floor Area	130 m2

Agent Details

Sujono Goi - 0417 142 683

Office Details

Melbourne
Suite 307 / 2 Queen Street
Melbourne VIC 3000 Australia
03 9620 0307

