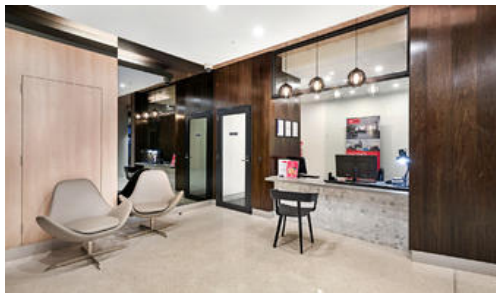


716, 39 Lonsdale St, Melbourne



Solid Investment In CBD

Perfectly Located in the heart of CBD, This secure apartment is minutes away to Melbourne China Town, Parliament Train station, Carlton Garden, RMIT & theater precinct on Exhibition St.

Internally it comprises of 2 bedrooms with built in robe, Open plan living and dining area opening to a small internal balcony

Facilities includes Common Laundry, Common Area with Sitting area on basement area

Currently on lease, provide a secure rental of \$ 2427 per calendar months until Feb 2019

Call Now for inspection or as per advertised.

The above information provided has been furnished to us by the vendor/s. We have not verified whether or not that information is accurate and do not have any belief in one way or the other in its accuracy. We do not accept any responsibility to any person for its accuracy and do no more than pass it on. All interested parties should make and rely upon their own inquiries in order to determine whether or not this information is in fact accurate.

2 1

Price
Property Type
Property ID

SOLD
residential
630

Agent Details

Sujono Goi - 0417 142 683

Office Details

Melbourne
Suite 307 / 2 Queen Street
Melbourne VIC 3000 Australia
03 9620 0307


VANTAGE POINT
REALTY