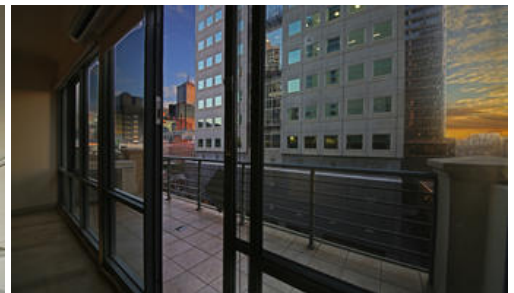
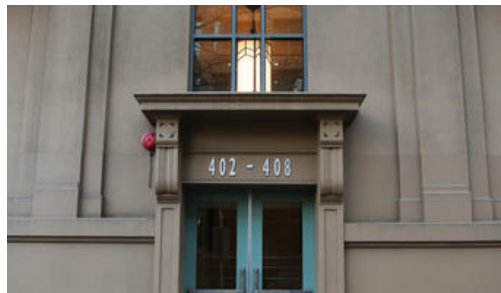




Unit 410, 402-408 La Trobe St, Melbourne



HUGE & SPACIOUS DUAL LEVEL Apartment.

Perfectly located in the heart of CBD, This TOP FLOOR apartment on Empire Building is minutes away from Victoria Market, MELbourne CBD and easily accessible by Melbourne Central and Flagstaff station.

Internally on the ground floor comprises of Huge open plan living and dining area with full length windows opening to a spacious open plan balcony, Spacious kitchen with gas cooking appliances and powder room/ second bathroom

On the first floor, 3 spacious bedrooms with built in robe and main bathroom with internal laundry facility

This apartment is also come with 1 carpark on title.

Inspect by appointment or as per advertised.

3 2 1

Price

Property Type

Property ID

SOLD

residential

576

Agent Details

Sujono Goi - 0417 142 683

Office Details

Melbourne

Suite 307 / 2 Queen Street

Melbourne VIC 3000 Australia

03 9620 0307

The above information provided has been furnished to us by the vendor/s. We have not verified whether or not that information is accurate and do not have any belief in one way or the other in its accuracy. We do not accept any responsibility to any person for its accuracy and do no more than pass it on. All interested parties should make and rely upon their own inquiries in order to determine whether or not this information is in fact accurate.

